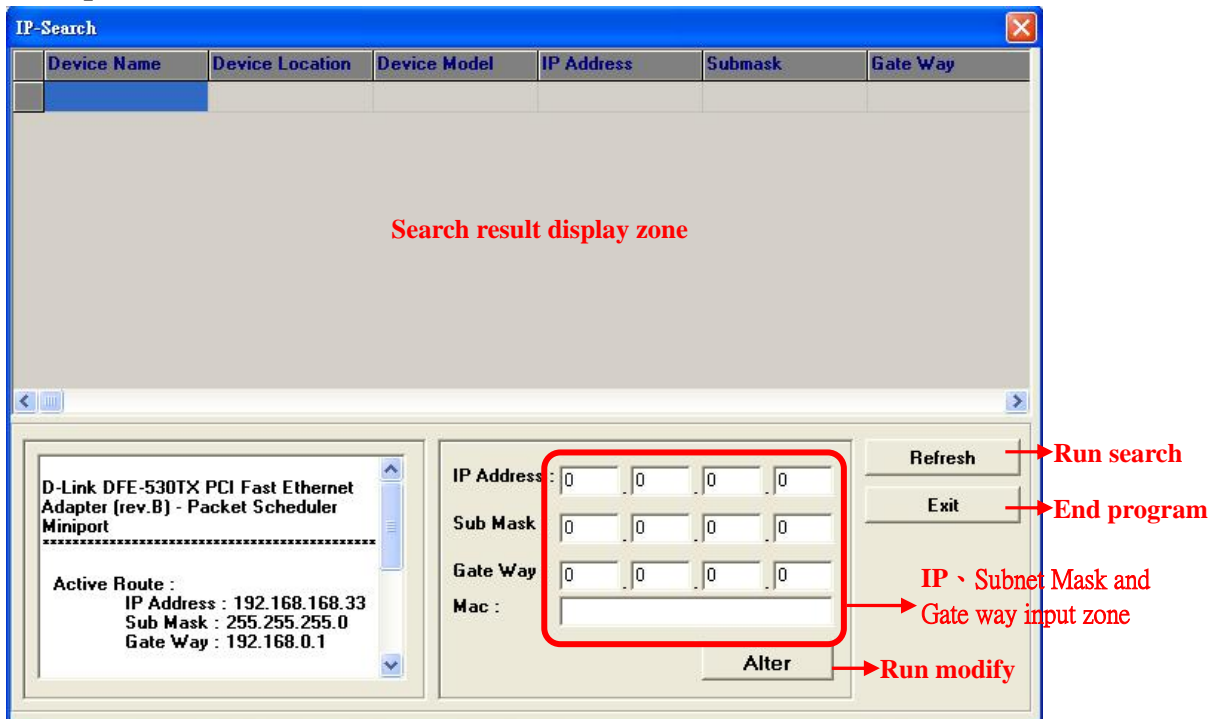


# IP Search Software Manual

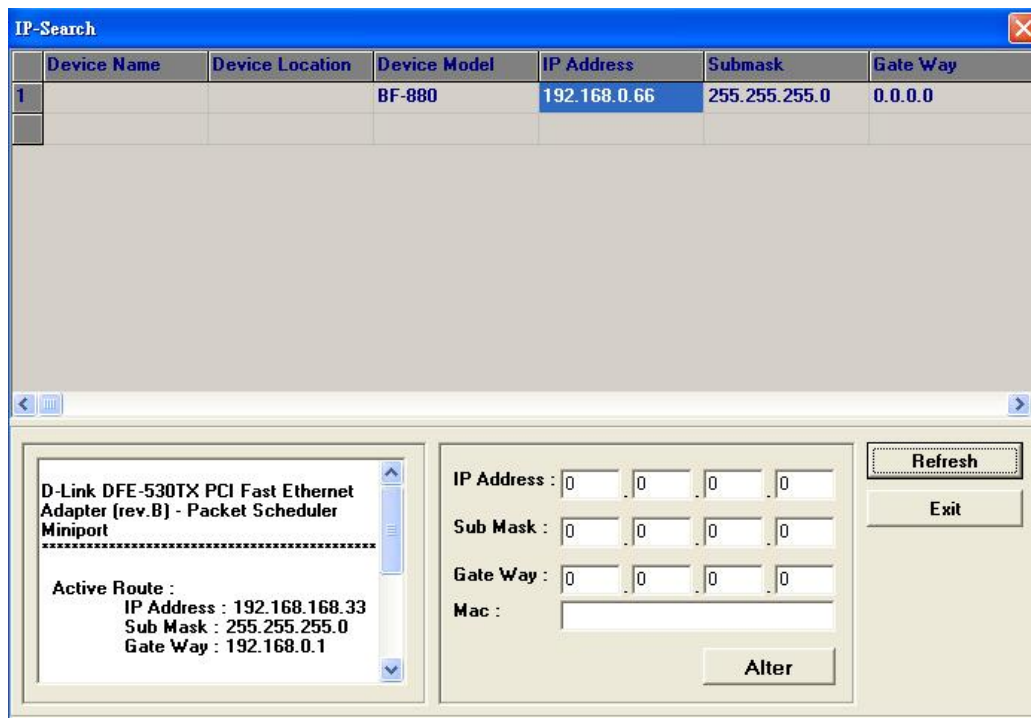
## 1. Menu Description



【Picture 1】

## 2. IP Search

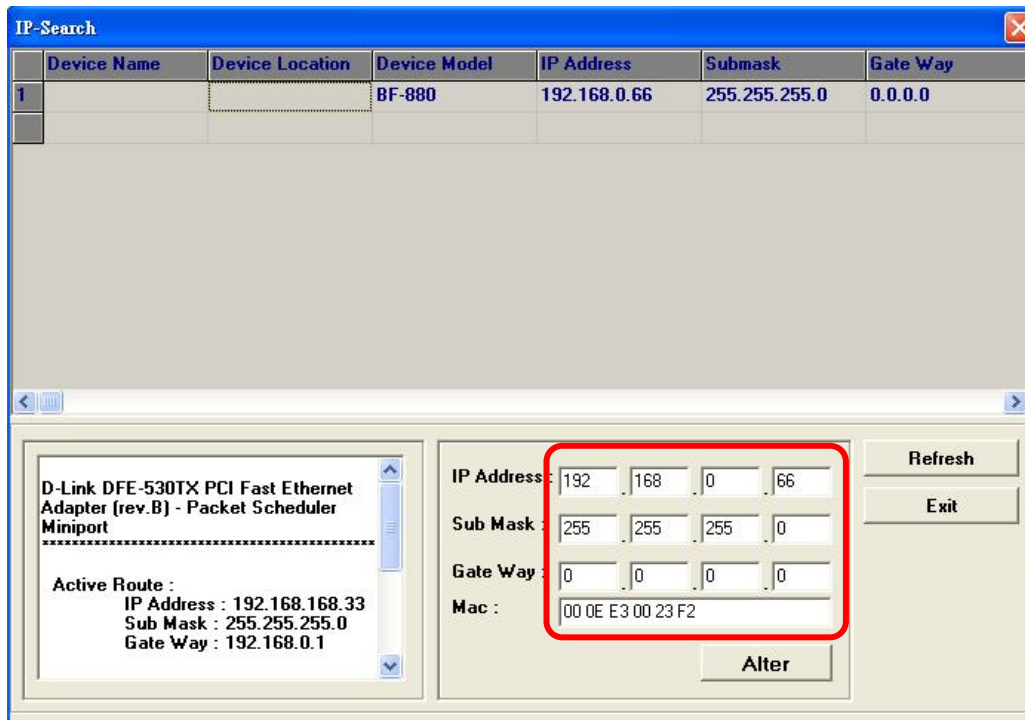
Press "Refresh" to search. The result of search will show in "Search result display zone". See 【Picture 2】. If you can't find the equipment connected, please check connection is correct or not and the computer installs TCP/IP protocol or not.



【Picture 2】

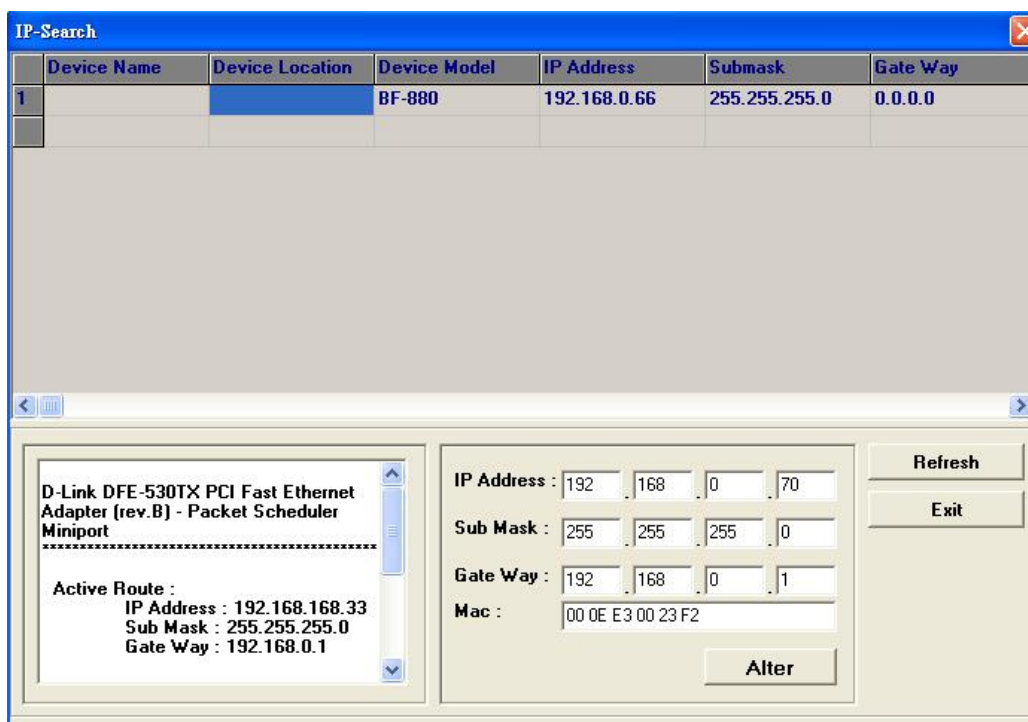
### 3. Modify IP、Subnet Mask and Gateway

- I. Move the mouse icon on equipment which you want to modify in “Search result display zone” and click left button.  
“IP、Subnet Mask and Gateway input zone” will show IP、Subnet Mask、Gateway and Mac of the equipment. See【Picture 3】



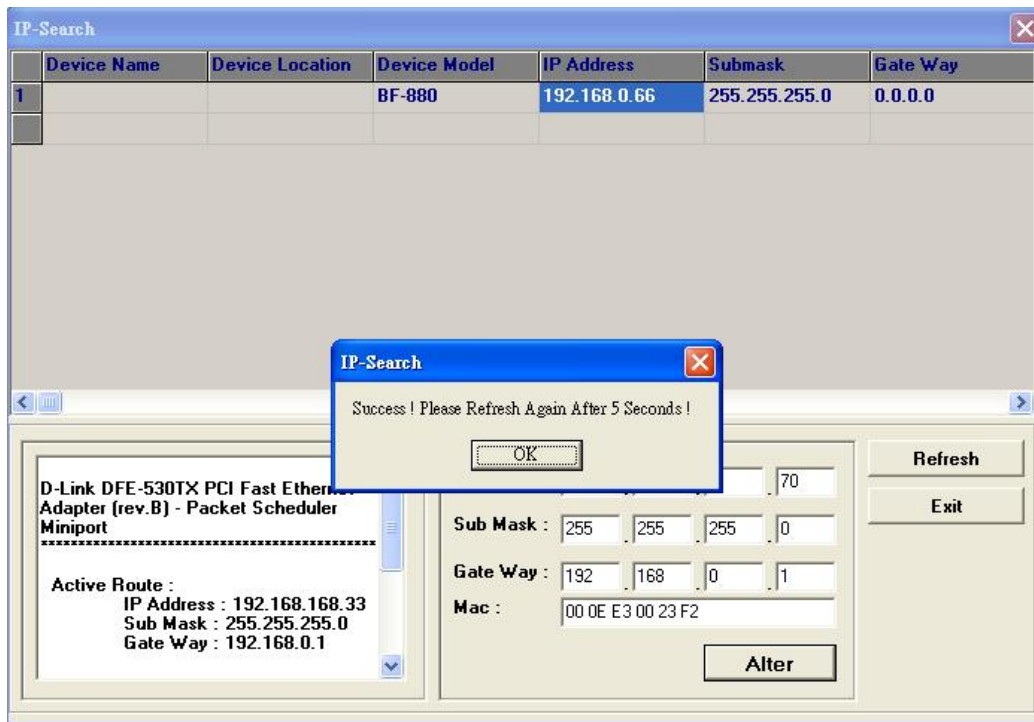
【Picture 3】

- II. Enter IP、Subnet Mask and Gateway which you want to modify in “IP、Subnet Mask and Gateway input zone” .  
See 【Picture 4】



【Picture 4】

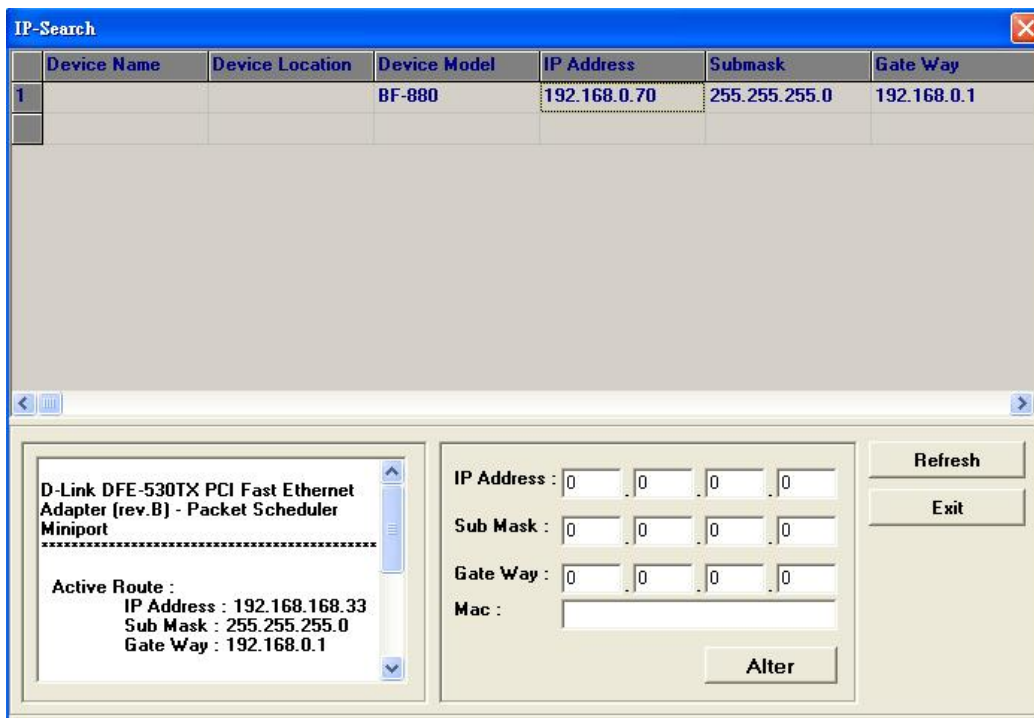
III. Press “Alter” to modify then system will show **【Picture 5】** .



**【Picture 5】**

IV. Click “OK” to close the message window.

V. Click “Refresh” to upgrade data. The “Search result display zone” will show the equipment which had modified IP 、Subnet Mask and gateway. See **【Picture 6】** .



**【Picture 6】**